

Kim Surratt

From: Kimberly Woods <Kimberly.Woods@RubinBrown.Com>
Sent: Friday, December 10, 2021 9:25 AM
To: Kim Surratt
Cc: Douglas Winters
Subject: FW: [EXTERNAL] RE: Committee to Review Child Support Guidelines

Good morning

I gave public comment at the committee meeting this morning requesting some clarification on the language of 425.025. My specific items are as follows:

1. 425.025(1)(b) states to include investment income “not including the principal.” We are interpreting this to mean that gross income should not be reduced by investment losses. Does this need to be clarified?
2. 425.025(1)(k) states to include “undistributed income” of a controlled business, but does not address distributed income of the business, which could be interpreted to double-count income that is distributed, especially since there is no specified time frame for calculating gross income. “Undistributed income” also does not provide an exclusion for amounts required to be retained in the business to pay debt or to hold for operating costs.
3. 425.025(1)(k)(1) defines the “reasonable allowance for economic depreciation” to mean depreciation on assets computed using straight-line method and useful lives as determined under federal income tax laws and regulations. There is confusion as to whether the determination of which assets are depreciable should be made using federal income tax laws or whether another standard, such as GAAP, should be used to determine which assets are depreciable. For example, there are various intangible assets that might be depreciated over 10 years under GAAP but not at all under tax. Would those assets be included under the term “economic depreciation” and if so, would we then apply tax rules to depreciate them over 15 years?

We recently were asked to calculate gross income under the standards for a divorce case that ultimately settled, but these questions had a dramatic impact on the calculation of gross income for determining the child support. I am happy to help in any way I can to clarify these issues.

Thank you

Kimberly Woods

Manager, Tax

[Send Me files Securely](#)



p: 702.579.7038

f: 702.876.7946

a: 10801 W Charleston Blvd | Ste 300 | Las Vegas, NV 89135

e: kimberly.woods@rubinbrown.com

w: www.RubinBrown.com



An independent member of Baker Tilly International

From: Douglas Winters <Douglas.Winters@RubinBrown.Com>
Sent: Tuesday, December 7, 2021 1:25 PM
To: Kimberly Woods <Kimberly.Woods@RubinBrown.Com>
Subject: FW: [EXTERNAL] RE: Committee to Review Child Support Guidelines

Kim,

Are you interested?

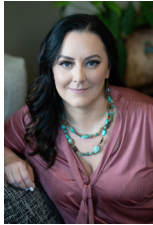
Best regards,

Douglas S. Winters, CPA
RubinBrown LLP
702.415.2112 (main)
702.579.7043 (direct)
702.876.7946 (fax)
10801 W. Charleston Blvd | Suite 300 | Las Vegas, NV 89135
Please click here to: [Send Me Files Securely](#)

From: Kim Surratt <kim@surrattlaw.com>
Sent: Tuesday, December 7, 2021 1:22 PM
To: Douglas Winters <Douglas.Winters@RubinBrown.Com>; Cathy Kaplan <ckaplan@dwss.nv.gov>;
shfisher@dwss.nv.gov
Subject: RE: [EXTERNAL] RE: Committee to Review Child Support Guidelines

The next hearing is this Friday. The information is on the DWSS website. I suggest making a comment during “public comment” to allow for it to be placed on the next agenda.

Best regards,



Kimberly Surratt, Esq.
Phone: 775-636-8200
3705 Lakeside Drive, Reno, NV 89509
Web: www.LawyersForFamilies.com
President, Nevada Justice Association
Board Member, Academy of Adoption
and Assisted Reproductive Attorneys
Past Chair, State Bar of NV Family Law

Section

CONFIDENTIALITY NOTICE: EMAIL TRANSMISSIONS MAY NOT BE SECURE. THIRD PARTIES CAN AND DO INTERCEPT EMAIL. YOU ASSUME THE RISK THAT ANY CONFIDENTIAL OR PRIVILEGED INFORMATION MAY BE INTERCEPTED AND VIEWED BY THIRD PERSONS. EMAIL CAN BE ALTERED. THIS OFFICE CANNOT GUARANTEE THE INTEGRITY OF THIS COMMUNICATION. **DISCLAIMER:** THE INFORMATION IN THIS E-MAIL IS PROTECTED BY ATTORNEY-CLIENT PRIVILEGE. IT IS CONFIDENTIAL, INTENDED ONLY FOR THE USE OF THE INDIVIDUAL OR ENTITY NAMED ABOVE. IF YOU ARE NOT THE INTENDED RECIPIENT, YOU ARE HEREBY NOTIFIED THAT ANY DISTRIBUTION OR COPY OF THIS COMMUNICATION IS STRICTLY PROHIBITED. IF YOU HAVE RECEIVED THIS COMMUNICATION IN ERROR, PLEASE NOTIFY US BY TELEPHONE, AT [775-636-8200](tel:775-636-8200) THANK YOU.

From: Douglas Winters <Douglas.Winters@RubinBrown.Com>
Sent: Tuesday, December 07, 2021 1:02 PM
To: Kim Surratt <kim@surrattlaw.com>; Cathy Kaplan <ckaplan@dwss.nv.gov>; shfisher@dwss.nv.gov
Subject: RE: [EXTERNAL] RE: Committee to Review Child Support Guidelines

Kim,

Thank you for your response. While working on a case, that has settled, to determine gross income pursuant to NAC 425.025, it seems, at least from an accounting / financial perspective, there might be an opportunity to clarify some of the wording. If there will be any future workshops, agenda topics, or discussions regarding gross income, I, or one of my colleagues, would be interested in participating.

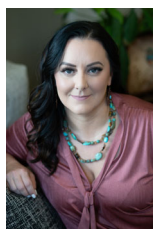
Best regards,

Douglas S. Winters, CPA
RubinBrown LLP
702.415.2112 (main)
702.579.7043 (direct)
702.876.7946 (fax)
10801 W. Charleston Blvd | Suite 300 | Las Vegas, NV 89135
Please click here to: [Send Me Files Securely](#)

From: Kim Surratt <kim@surrattlaw.com>
Sent: Tuesday, December 7, 2021 11:35 AM
To: Douglas Winters <Douglas.Winters@RubinBrown.Com>; Cathy Kaplan <ckaplan@dwss.nv.gov>; shfisher@dwss.nv.gov
Subject: [EXTERNAL] RE: Committee to Review Child Support Guidelines

Hello Douglas:

I am the chair of the Committee to Review Child Support Guidelines. Your email below was forwarded to me from DWSS. Please know that the committee does not serve a function as legal advisors for such questions. DWSS has placed all of the agendas and minutes from our meetings on their website to serve the role of providing the intent and background on the decisions of the committee. Please know that the meeting recordings are being worked on by DWSS right now and only a couple are posted so far. Here is a link to the materials for your review: [cs_meeting_minutes \(nv.gov\)](https://www.dws.nv.gov/cs_meeting_minutes).



Kimberly Surratt, Esq.
Phone: 775-636-8200
3705 Lakeside Drive, Reno, NV 89509
Web: www.LawyersForFamilies.com
President, Nevada Justice Association
Board Member, Academy of Adoption
and Assisted Reproductive Attorneys
Past Chair, State Bar of NV Family Law

Section

CONFIDENTIALITY NOTICE: EMAIL TRANSMISSIONS MAY NOT BE SECURE. THIRD PARTIES CAN AND DO INTERCEPT EMAIL. YOU ASSUME THE RISK THAT ANY CONFIDENTIAL OR PRIVILEGED INFORMATION MAY BE INTERCEPTED AND VIEWED BY THIRD PERSONS. EMAIL CAN BE ALTERED. THIS OFFICE CANNOT GUARANTEE THE INTEGRITY OF THIS COMMUNICATION. **DISCLAIMER:** THE INFORMATION IN THIS E-MAIL IS PROTECTED BY ATTORNEY-CLIENT PRIVILEGE. IT IS CONFIDENTIAL, INTENDED ONLY FOR THE USE OF THE INDIVIDUAL OR ENTITY NAMED

ABOVE. IF YOU ARE NOT THE INTENDED RECIPIENT, YOU ARE HEREBY NOTIFIED THAT ANY DISTRIBUTION OR COPY OF THIS COMMUNICATION IS STRICTLY PROHIBITED. IF YOU HAVE RECEIVED THIS COMMUNICATION IN ERROR, PLEASE NOTIFY US BY TELEPHONE, AT [775-636-8200](tel:775-636-8200) THANK YOU.

From: Douglas Winters <Douglas.Winters@RubinBrown.Com>
Sent: Monday, November 29, 2021 11:15 AM
To: Steve H. Fisher <shfisher@dwss.nv.gov>
Subject: Committee to Review Child Support Guidelines

Hello Mr. Fisher,

I have been asked to compute “gross income” pursuant to NAC 425.025 and have a question regarding “economic depreciation.” I see that pursuant to NRS 425, there is a “Committee to Review Child Support Guidelines”.

Is there a committee member that may be familiar with the intent of how to comply with NAC 425.025(k)(1) “economic depreciation”?

If so, would you mind sending me the person(s) contact information?

Best regards,

Douglas S. Winters, CPA

RubinBrown LLP

702.415.2112 (main)

702.579.7043 (direct)

702.876.7946 (fax)

10801 W. Charleston Blvd | Suite 300 | Las Vegas, NV 89135

Please click here to: [Send Me Files Securely](#)

Any federal tax advice contained in this communication (including any attachments): (i) is intended for your use only; (ii) is based on the accuracy and completeness of the facts you have provided us; and (iii) may not be relied upon to avoid penalties.

RubinBrown LLP is a member of the global network of Baker Tilly International Ltd., the members of which are separate and independent legal entities.

This message may contain information that is confidential. Unauthorized forwarding, copying, printing, distribution, or any other unauthorized use of the information in this message is prohibited. If you believe you are not the intended recipient of the message, please notify the sender by return email and delete this message.

Any federal tax advice contained in this communication (including any attachments): (i) is intended for your use only; (ii) is based on the accuracy and completeness of the facts you have provided us; and (iii) may not be relied upon to avoid penalties.

RubinBrown LLP is a member of the global network of Baker Tilly International Ltd., the members of which are separate and independent legal entities.

This message may contain information that is confidential. Unauthorized forwarding, copying, printing, distribution, or any other unauthorized use of the information in this message is prohibited. If you believe you are not the intended recipient of the message, please notify the sender by return email and delete this message.

Any federal tax advice contained in this communication (including any attachments): (i) is intended for your use only; (ii) is based on the accuracy and completeness of the facts you have provided us; and (iii) may not be relied upon to avoid

penalties.

RubinBrown LLP is a member of the global network of Baker Tilly International Ltd., the members of which are separate and independent legal entities.

This message may contain information that is confidential. Unauthorized forwarding, copying, printing, distribution, or any other unauthorized use of the information in this message is prohibited. If you believe you are not the intended recipient of the message, please notify the sender by return email and delete this message.